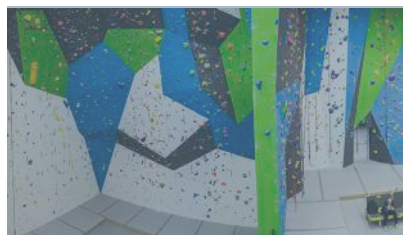
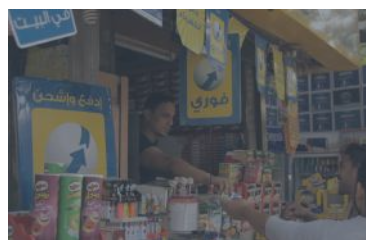
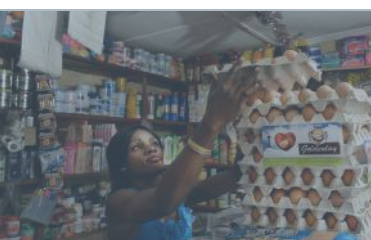


EMPEA

The global industry association for private capital in emerging markets

MEMBERSHIP



Distinctive Global Approach

EMPEA is the global industry association for private capital in emerging markets. An independent, non-profit organization, the association's membership comprises 300+ firms representing institutional investors, fund managers and industry advisors who together manage more than US\$5 trillion in assets across 130 countries.

EMPEA's members share the organization's belief that private capital is a highly suited investment strategy in emerging markets, with a unique ability to deliver attractive long-term investment returns and promote the sustainable growth of companies and economies.

In support of its mission, EMPEA:

Researches, analyzes and disseminates authoritative information on emerging markets private capital fundraising, investment and exits while continuously monitoring and reporting on industry trends, benchmarks, best practices and market developments;

Convenes meetings and conferences around the world, which provide its members, prospective investors and other interested stakeholders with forums and opportunities to debate, network and learn about key issues affecting private capital investing in emerging countries; and

Advocates for policy and regulatory reforms that strengthen the environment for private capital investing in emerging markets.

MISSION:

Fostering a vibrant and informed industry to realize investment returns and sustainable growth in emerging markets.



An Industry Association Like No Other

Research & Intelligence

EMPEA prides itself on being a preeminent source of research on private capital activity and trends across emerging markets. EMPEA's best-in-class data covers fundraising, investment and exit activity in emerging markets by long-term, direct investment funds across private equity, private credit and infrastructure & real assets.

EMPEA's research is regularly featured in leading newspapers and journals, GP pitch books, and LP strategy memos. Members have come to rely on custom research support for insight into investors' allocations to various markets, competitive landscapes and data on individual funds and transactions.

Global Network & Connectivity

Throughout the year, EMPEA organizes conferences, roundtables, executive briefings and unique member events around the world, where members can benefit from powerful business networking opportunities and the chance to meet and hear from the industry's

most prominent leaders and practitioners.

Through participation on Councils and member Communities, members have the opportunity for peer-to-peer exchange and ability to shape the organization's focus areas.

Education & Advocacy

To promote the industry on members' behalf, EMPEA provides information to a broad constituency of players that influence developments in the asset class, including the media, regulators and institutional investors. EMPEA also organizes and participates in educational activities on behalf of its members and the asset class.

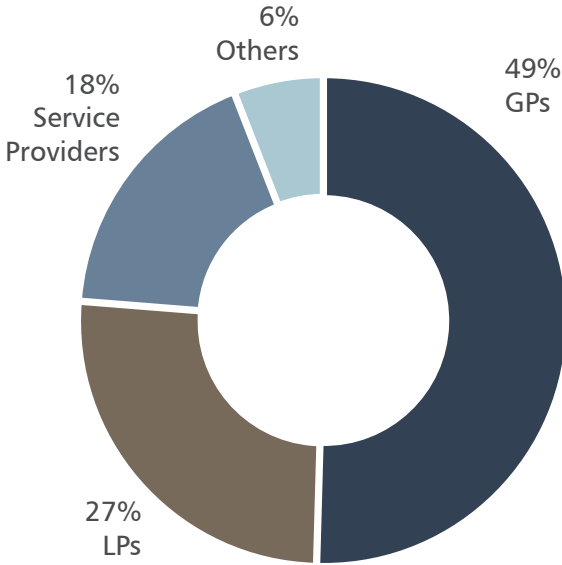
EMPEA creates guidelines and collaborates with industry partners to strengthen the knowledge base of emerging markets private capital opportunities and to advocate for policy and regulatory reforms that support a sustainable environment for private capital investing in these markets.





World-Class Member Community

EMPEA's 300+ members play a significant role in building the industry and represent every geographic region of the world and every type of private capital fund—from venture to growth capital to buyouts.



300+
Member Firms

60+
Countries

US\$5 trillion
Combined Assets
Under Management

EMPEA Councils

EMPEA's expert working Councils are integral to the organization's mission and serve to advise the association and broader industry on issues impacting specific regions and sectors, as well as to identify priority content, programs and initiatives that meet the needs of our members.

Each of EMPEA's Councils are composed of expert practitioners that comprise our diverse, global membership. In addition to outlining key focus issues for our members, EMPEA's Councils have also been integral to the creation of valuable industry resources.

EMPEA Councils Include:

- Africa
- Asia
- CEE/CIS – Turkey
- DFI
- Energy & Infrastructure
- Frontier Markets
- Impact Investing
- Latin America
- Legal & Regulatory
- Limited Partners
- Middle East
- Private Credit

EMPEA Member Communities Include:

- Investor Relations & Marketing Member Community
- ESG Member Community
- General Counsel Member Community



Board of Directors

Robert Petty
(Chairman)
*Managing Partner
& Co-Founder*
Clearwater Capital Partners

Teresa Barger
(Vice Chair)
*Co-Founder & Chief
Executive Officer*
Cartica Management, LLC

Rebecca Xu
(Vice Chair)
*Co-Founder &
Managing Director*
Asia Alternatives
Management LLC

Runa Alam
*Co-Founding Partner &
Chief Executive Officer*
Development Partners
International (DPI)

Thomas C. Barry
*President & Chief
Executive Officer*
Zephyr Management, L.P.

Fernando Borges
*Managing Director &
Co-Head of Carlyle South
America Buyout Group*
The Carlyle Group

Torbjorn Caesar
Senior Partner
Actis

Drew Guff
*Managing Director &
Founding Partner*
Siguler Guff & Company

**Mark Kenderdine-
Davies**
General Counsel
CDC Group plc

Maria Kozloski
*Global Head & Chief
Investment Officer,
Private Equity Funds*
International Finance
Corporation

Andrew Kuper
Founder & CEO
LeapFrog Investments

**Temitope (Tope)
Lawani**
*Co-Founder &
Managing Partner*
Helios Investment Partners

Jeffrey Leonard
*President & Chief
Executive Officer*
Global Environment
Capital Company

Piero Minardi
Managing Director
Warburg Pincus

Sanjay Nayar
*Member & Chief Executive
Officer, KKR India*
KKR India Advisors Pvt.
Ltd.

Ziad Oueslati
Founding Partner
AfricInvest

Nicolas Rohatyn
*Chief Executive Officer &
Chief Investment Officer*
The Rohatyn Group

Maninder Saluja
*Partner & Co-Head,
Emerging Markets*
Private Equity
Quilvest

Yichen Zhang
*Chairman & Chief
Executive Officer*
CITIC Capital

APPLYING FOR MEMBERSHIP

You may submit an application for membership for your firm at [EMPEA.org](https://empea.org) or by emailing membership@empea.net.

All prospective member firms will be required to provide two references, one of which must be from an existing EMPEA member firm. To see the full list of EMPEA Member Firms, please visit [EMPEA.org](https://empea.org).

The Watergate Office Building
2600 Virginia Avenue N.W., Suite 500
Washington, D.C. 20037-1905
United States

Phone +1 202 333 8171
[EMPEA.org](https://empea.org)

Key Benefits of Service Provider Membership

EMPEA's firm-based membership structure allows a member firm's entire global staff to participate and benefit from the membership.

EMPEA's Leadership Circle

Members of EMPEA's premium Leadership Circle level are actively involved in the industry and contribute heavily to EMPEA's governance and leadership initiatives. Please e-mail membership@empea.net for information about our Leadership Circle benefits.



Quarterly data on fundraising, investment and exit activity in emerging markets by long-term direct investment funds across private equity, private infrastructure & real assets and private credit.

Members are able to request custom cuts of data for insight into investors' current and historical allocations to EM funds, funds in the market or those that are coming to market, trends and comprehensive listings of individual transactions in a variety of market segmentations.



Briefs and in-depth special reports with analysis and commentary on region- and sector-specific opportunities and industry-wide developments.



Special rates for EMPEA-led and select industry partner conferences, as well as invitations to exclusive events, receptions webinars, roundtables and briefings with industry leaders and peers around the world.



Ability to raise brand awareness and share thought leadership on EMPEA's industry research reports, news and events platforms.



Sponsorship and advertising opportunities targeted to emerging markets private capital stakeholders through EMPEA.org, EMPEA-led conferences, NewsWatch, roundtables, webinars, Council meetings, special reports, and more.



24/7 web portal access to EMPEA's proprietary data, analytics, special reports, upcoming events, educational seminars, webcasts and more.



Opportunity for senior company representatives to present at region- and sector-specific Councils that formally advise the association and execute work in support of industry needs.